

Vines & Branches

I am the vine, You are the branches.
John 15:5

IN THIS ISSUE

February
2010

Pastor/Moderator
article

Grapevine News
Birthdays/Calendar

Regional Assembly

In the Spirit Women's
Conference

NEATS
SpringFest

ODW Preview
Disciple Men Retreat
Awakening

Lenten Worship



Happy Valentine's Day

The Next Newsletter
will be April 6
Deadline Mar. 29

We've MOVED!

One office complete and one to go...

In October of 2009 the Northeast Area office moved back to its roots at 409 S. Pittsburg. But, just like the building is seeing new life with *In the Spirit Christian Church*" we are seeing new life with our offices. Stop by and see our new offices.



Northeast Area Notes:

Rev. Leslie Dotson
Associate Regional Pastor

HAPPY NEW YEAR! As I am writing this we are waiting for this horrible sleet, ice and snow storm to envelop us. We hear warnings from all aspects of our lives including radios, televisions and even our iPods. I watched people change within the last couple of days. Those whom I know as polite – suddenly changed. Those whom I know as calm – changed also.

My question is why? When I first heard about this storm, I took care of that which needed my attention. I took mom to see dad – just in case. I bought groceries including cat food. But more importantly I gave this storm up to God. For you see, I survived the “ICE STORM” a couple of years ago. I lost my electricity for over a week. Limbs from my 40+ foot pecan trees took out my electrical box. I found a place for mom and dad to stay (the last room in southeast Tulsa).

Because of my faith, I know with God’s help I can transition through this storm. Because of our faith, I know with God’s help we (the North East Area churches) can transition through any storm. As we lift our hearts and our prayers to our Creator, we can do anything.

Continued on page 3

Rev. Shane Hickey
Moderator-Elect

Keep Moving Forward

Greetings Brothers and Sisters in Christ,

I can certainly tell you it has been a very busy time in the Northeast Area. There are a lot of things going on behind the scenes. The Northeast office has been moved (old news) and Leslie and Laura have settled in. If you have not gotten a chance to see the area offices you will get your chance on February 15. The first area board meeting for 2010 will be start at 6:30 PM at In the Spirit Christian Church in Tulsa. Please come early board members or not and see our wonderful new location.

NEAT’s has also moved to its new location (31st and Harvard). I just recently visited and it is wonderful. It is a great location and it now gives Neat’s the room it needs to grow. Please take time to stop by to say hello to Richard and see this great new place.

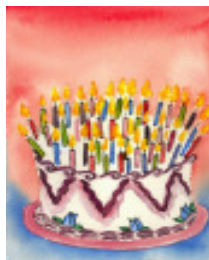
The Executive Committee is continuing to work to improve processes and procedure to help the leadership to better understand the workings of our NEACCO business. The committee just approved a new job description for our Camp Christian Administrator. It was an essential step to help us to maintain a clear understanding of not only the Camp Administrators responsibilities but NEACCO’s responsibilities to the administrator and his or her duties and welfare.

Continued on page 4



Grapevine News

Please pray for healing: **Gery Kinder, Gary Hagan, Ann Scott, wife of Tom Scott, James McFarland, Chleora Denning, wife of Kris Denning** † Lift up those for strength, courage & peace: **Connie English and Ann Jordan** † Churches in our area seeking pastors: **FCC, Jenks, FCC, Sand Springs, & FCC, Hominy** † Congratulations to **Janet Edge** on licensing and **Russ Albrecht** on his ordination.



Happy Birthday!!!

Whose Birthday is it?

(Pastors, associates, youth directors)

Glenn Davis-2/3
Anna Pratt-2/9

Loma Sullivan-2/11
Drea Walker-2/17
Mady Fraser-2/28
Ronald Nofziger-3/9
Ron Eden-3/17
Tom Schwartz-3/26
Fred Turner-3/31
Pat Baker-4/4
Mark Briley-4/5

Bob Weitzel-2/17
Jay Hoyt-2/28
Dawn Stemple-3/7
Dean McDaniel-3/15
Kris Denning-3/20
John Imbler-3/27
Shane Hickey-4/2
Laurel Ragland-4/5
Mary Tinnea-4/10

If I have missed your birthday please call the office & let me know

Three Month Camp Christian Financial Report

Balances

	Checking/Operating	Savings/Designated funds
Nov.	\$4059.67	\$24,877.40
Dec.	\$997.31	\$25,577.40
Jan.	\$6,090.94	\$31,342.59

Note: Last month's balance not reconciled, balance may change

2010 N.E. Area Calendar

- Feb. 3 Staff Meeting in OKC-Office Closed
Feb. 9 Day at the Legislature
Feb. 12-14 Springfest-Central Christian Camp
Feb. 15 N.E. Area Board Meeting-
In the Spirit Christian Church-6:30pm
Feb. 17 Disciples Ministers Assoc.
Feb. 17 ASH WEDNESDAY
Feb. 21 Awakening-Forest Park, Tulsa-4-5:30pm
Feb. 21 Week of Compassion Sunday
Feb. 22 Lenten Worship-East Side, Tulsa -4:30pm
Feb. 26 ODW Spring Meeting-FCC, Wagoner-9:30am
Feb. 26-27 Disciples Men Retreat-
Central Christian Camp
Mar. 3 Staff Meeting in OKC-Office Closed
Mar. 5 WORLD DAY OF PRAYER
Mar. Preview-Lawton-13, Stroud-20, Woodward-27
Mar. 14 Daylight Savings Time Begins
Mar. 12 Sexual Ethics Seminar-Tulsa
Mar. 28 PALM SUNDAY

In the Spirit Women's Conference 2010

Theme: Woman: "Dimensions of Her Love"
1 Corinthians 13:1

Friday, March 5 & Saturday, March 6
409 S. Pittsburg Ave.
Tulsa, OK
Ph. 918-836-6823

Speakers:
*Pastor Olivia Aiken,
Min. Sheilia Barnes
Rev. Nancy Pittman, Ph.D.*

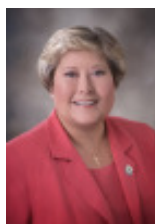
Workshop Leaders:
*Tonielle Bent
Rev. Ann Jordan, M.Div.
Rev. Gina Jackson, M.Div.
Maridee Lindley, MA, LSWA*

For more information about
registration costs and event times go
to www.neacco.org

2010 Regional Assembly

April 22-24, 2010

Central Christian Church, Enid



Here--Lt. Gov. Jari Askins, addresses the assembly on Thursday about the "Issues and Needs of Children in Oklahoma."

There--Rev. Sharon Watkins, General Minister and President, preaches at Friday nights worship about the Christian Church (DOC) as a "Movement for Wholeness in a Fragmented World."



Everywhere--Bethany Lowery preaches at Saturday's closing worship about the church's mission

Workshops will emphasize this theme with guests:

Our Mission Partners, Sister Denisse Picardo and Erin McKinney from the Dominican Republic, Bob Shebeck of Global Ministries, Rev. Lura Cayton on Church World Service, Rev Gary Weeks on Disaster Response Planning Rev. Jenny Wynn on Mission and Service Opportunities for Young Adults

Rev. Rick Lowery will lead a Bible Study on Friday and Saturday and a new project, "Withdraw for a While Unto Bethany," which offers a series of opportunities for rest/renewal/creativity.



The youth will enjoy a Friday night lock-in at the Enid YMCA and other activities which include the Christian rock band, "Skyline Drive."

All of this will be centered at Central Christian Church, 1111 W. Broadway, Enid.

AT MONTHLY GATHERINGS

Monthly Gatherings of the Northeast Active Timers (NEATs) are held every second Wednesday in Peake Hall at Harvard Ave. Christian Church, 5502 S. Harvard in Tulsa, with fellowship beginning at 10 am and program at 10:30 am. The Feb. 10 event will feature two published writers: Marjorie Baton of Muskogee and the Rev. Arlyn Clary of Broken Arrow, a retired Disciple of Christ minister. Ms. Barton's most recent release is entitled "Leaning on a Legacy, the WPA in Oklahoma". Rev. Clary will give a devotion from his publication, "A Book of Good Medicine - An affirmation of Life". Following a catered Mexican meal, (\$8 each) the women of the NEATs Board of Directors will model fashions from Mary-Ruby Apparel. Attendees are requested to bring paper items for The Clarehouse (a hospice home in Tulsa).

The March 20 event will feature Connie Cronley, writer and director of the Iron Gate Ministry in Tulsa. Food will be collected to donate for needy families. \$8 catered meal served at noon.

Trips scheduled by NEATs for anyone 55+ include 3 days to Hot Springs, March 23-25; Ancient Egypt & the Nile, May 21-June 4; and Oberammergau, Germany, to see the Passion Play and experience neighboring countries. For information and reservation, call 743-1303. NEATs is located at 3119 S. Jamestown Ave., Tulsa.

Rev. Leslie Dotson's article continued from page 2

We can come together and pray for those who have spiritual and physical issues as we lift our voices to the Great Physician. We can come together to help those less fortunate with our donations offered with love and grace.

We can do anything through the power of the One we call God. We can do anything through the power of the One we call Jesus the Christ.

I look forward to serving you and praying with you this year after we transition through this storm.

Blessings,
Leslie



Cost: \$98 per person
For more information go to
www.okdisciples.org

Rev. Shane Hickey article continued from page 2

The committee approved the removal of 'interim' for Jeff Kendall's title as Camp Administrator. We look forward to working with the Camp Commission and Jeff to continue the progress the camp has made these past 6 months.

On January 25 the Executive Committee met to begin the process of choosing recipients for the Cargile Older Adult Ministry Grants. The committee wishes to thank all those who applied. All applicants provided very detailed and worthwhile ministries for the committee to consider. We are not sure at this time how much money will be available. We will be bringing the proposed recipients to the Board in February for approval.

Be sure to mark you calendars for the upcoming 'Awakening' February 21; 4:00-5:30 @ Forest Park Christian Church in Tulsa. Also, check out the NEACCO website, it has been updated. There has been a lot accomplished (with your help) in 2009, but we have so much more to do. We will need to continue to work together as the body of Christ to accomplish all that needs to be done. I look forward to working with you!

Until next time....

Grace and Peace

A handwritten signature in black ink that reads "Shane Hickey".

To schedule an event at Camp Christian you may contact Jeff at (918) 476-5712, cell number 352-5533 or e-mail him at manager@campchristianok.org.

Disciples Women Preview



Previews will start at 9:30 am, ending at 2 pm with lunch included. Workshops will include: Study, Mission, Service, Leadership, and Worship.

These are just the basics, **THE FUN** will be in the door prizes, Cokesbury Christian bookstore, skits, Free Trade artisans and farmers gift store, (SERRV international online at www.SERVV.org).

REGISTRATION COST is \$15.

March 13-FCC, Lawton - 701 S.W. D. Ave.

March 20-FCC, Stroud-323 W. 4th St.

March 27-FCC, Woodward-1316 9th St.

For more information:

www.okdisciples.org/women
or call 405-528-3577

Oklahoma Disciples Men's Retreat



What Does It Mean Be
A Man of Faith in
Today's World?

Feb. 26-27

Central Christian Camp

A Three Generation Perspective

Hear these speakers:

Josh Leu, Brian Meyer &
Kyle Maxwell

Special Music Guest:

Delivered

Cost: \$69.95 per person
First Timers: ONLY \$39.95!



An Awakening!
Sponsored by the
Growing Congregation
Committee

featuring
Rev. Romney Nesbitt

*"In the Spirit's Flow:
Creativity as a Spiritual Practice"*

Sunday, February 21
Forest Park Christian Church
9102 S. Mingo - Tulsa
4-5:30 pm

Make sure to mark your calendar and plan on attending this uplifting event. Along with our guest, Rev. Nesbitt who will deliver the message, there will be great music and great fellowship.

"An Awakening" is the annual reunion of the Christian Churches (DOC) who gather together to be rejuvenated and inspired in our work for the Lord, through the Word, Singing and Fellowship. A love offering will be taken to support future events of this committee.



2010 Lenten Worship
February 22

East Side Christian Church

1438 S. Indianapolis

4:30 pm Fellowship ~ 5:00 pm worship

There will be a meal following the worship.

Please RSVP to the

Oklahoma Disciples Center

405-528-3577 or 888-528-6552



Northeast Area of the
 Christian Church (Disciples of Christ) in Oklahoma
 409 S. Pittsburg
 Tulsa, OK 74112

NON-PROFIT ORG.
U.S. POSTAGE
PAID
TULSA, OK
PERMIT NO.1222

Three Month N.E. Area Financial Report
Balances

	Checking Operating	Savings Designated fund
Nov.	\$1,283.92	\$61,343.12
Dec.	\$857.66	\$62,020.86
Jan.	\$8635.92	\$64,777.86

Note: Last month's balance not reconciled, balance may change

PRAYER CALENDAR February, March & April

- Feb. 7** Federated Christian, Checotah-In transition
- Feb. 14** FCC, Claremore-Charles Ragland
- Feb. 21** FCC, Henryetta-Kris Denning
Week of Compassion Offering-DMF
- Feb. 28** FCC, Hominy-In transition
- Mar. 7** FCC, Jenks-In transition
- Mar. 14** Odyssey Christian, Jenks-Phil Ball
- Mar. 21** So. Grand Lake, Langley-Gina Jackson
- Mar. 28** FCC, Mannford-Jay Hoyt
- Apr. 4** Bethany Christian, Miami-Ron Eden
Easter Offering-DMF
- Apr. 11** North East Active Timers-Richard Ziglar
- Apr. 18** Regional Assembly-Apr. 22-24
- Apr. 25** FCC, Morris-Thomas Schwartz

Your N.E. Area Staff

Associate Regional Pastor: Rev. Leslie Dotson
 E-mail: ldotson@okdisciples.org

Administrative Assistant: Laura Townsley
 E-mail: ltownsley@okdisciples.org

409 S. Pittsburg, Tulsa, OK 74112
 PH: (918) 743-6202 or 800-561-0125

FAX: (918) 743-6204 ~ Office Hours: 8:30-4:30

Please visit us at www.NEACCO.org

Camp Christian Administrator: Jeff Kendall
 275 Camp Christian Lane, Chouteau, OK 74337
 PH: (918) 476-5712 FAX: (918) 476-5702

E-mail: manager@campchristianok.org
 WebSite: www.campchristianchouteau.org

Disciples Center Information: www.okdisciples.org

N.E. Area Board will be
Feb. 15, 2010
In the Spirit Christian Church,
409 S. Pittsburg
Tulsa ~ 6:30 p.m.